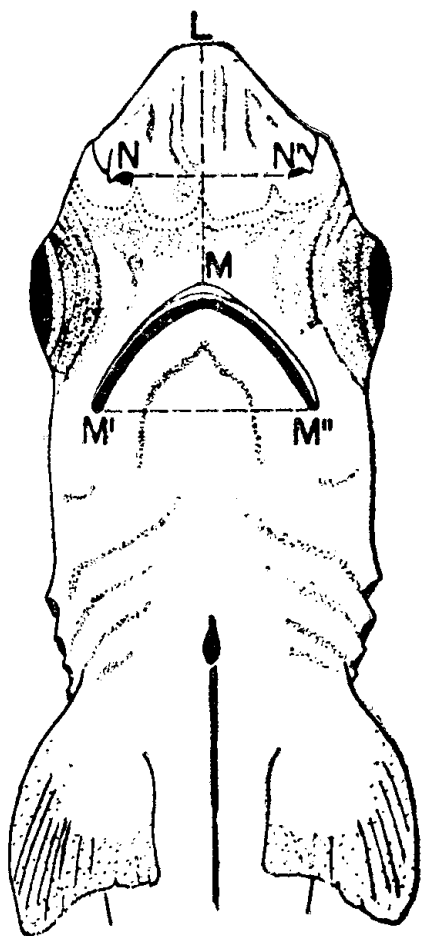


SOME MORPHOMETRIC DATA ON SHARK EMBRYOS

Rui Simões de Menezes

Estação de Biologia Marinha
 Universidade Federal do Ceará
 Fortaleza — Ceará — Brasil



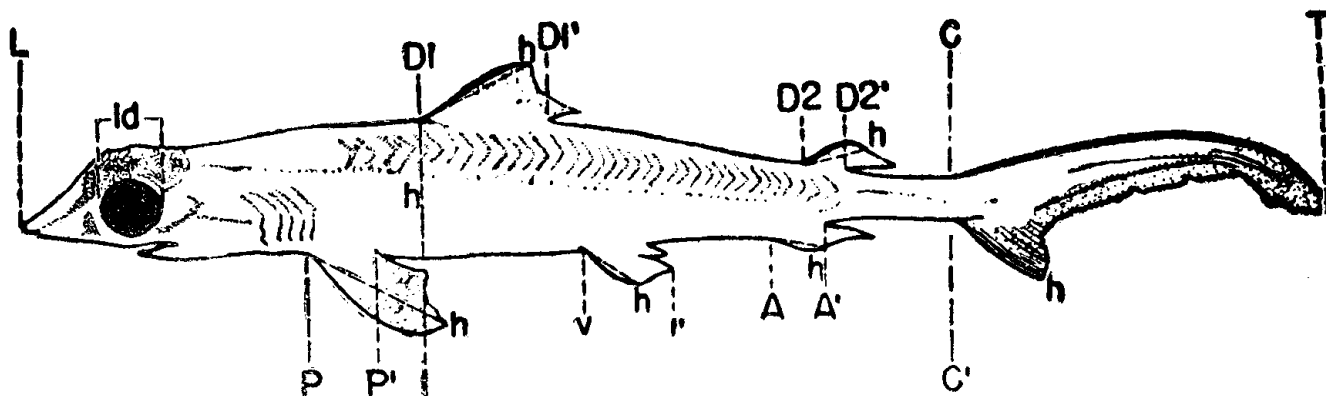
In this paper we present some morphometric data on shark embryos found in pregnant females caught in front of Mucuripe Beach (Fortaleza, State of Ceará, Brazil).

Sixteen embryos were obtained from a female of *Carcharinus porosus* (Ranzani, 1840), caught in September 2, 1966, and their identification was based on Bigelow & Schroeder (1948).

All embryos of *Carcharinus porosus* were morphometrically analysed (figure 1, table I), according to Bigelow & Schroeder (1948); they say that these embryos have not yet been described. The embryos ranged from 152 to 220 mm total length.

The two smallest specimens of *Carcharinus porosus* morphometrically analysed in literature (Bigelow & Schroeder, 1948), with a 485 mm and 500 mm total length, were obtained in Colón (Panamá, Atlantic coast). Eighteen proportional dimensions (in per cent of total length) were considered: snout

Figure 1 — Embryo of *Carcharinus porosus* (Ranzani, 1840) : LT = total length, LM = snout to mouth, M'M'' = mouth breadth, Id = eye diameter, NN' = distance between nostrils, D1h = height of dorsal 1, D1D1' = base of dorsal 1, D2h = height of dorsal 2, D2D2' = base of dorsal 2, Ah = height of anal, AA' = base of anal, CT = upper margin of caudal, C'h = lower margin of caudal, Ph = anterior margin of pectoral, P'i = inner margin of pectoral, ih = distal margin of pectoral, Vh = anterior margin of pelvic, hi' = distal margin of pelvic, LD1 = snout to dorsal 1, LD2 = snout to dorsal 2, LA = snout to anal, LP = snout to pectoral, LV = snout to pelvic, D1'D2 = interspace between dorsal 1 and 2, D2'C = interspace between dorsal 2 and caudal, A'C' = interspace between anal and caudal, h = greatest depth.



length in front of outer nostrils — 4.5 and 4.3; snout length in front of mouth — 8.9 and 8.7; mouth breadth — 3.2 and 7.9; mouth height — 5.4 and 5.3; distance between inner ends of nostrils — 5.8 and 5.8; opening length of 1st gill slit — 2.5 and 2.6; length of base of dorsal 2 — 3.4 and 3.4; length of base of anal — 4.6 and 4.6; inner margin of pectoral — 5.9 and 6.0; distance from snout to dorsal 1 — 33.0 and 32.2; distance from snout to dorsal 2 — 64.3 and 62.6; distance from snout to upper caudal — 73.7 and 73.4; distance from snout to pectoral — 23.5 and 23.8; distance from snout to pelvic — 47.0 and 48.6; interspace between dorsal 1 and dorsal 2 — 20.7 and 20.6; interspace between dorsal 2 and caudal — 7.8 and 7.0; interspace between anal and caudal

— 7.6 and 6.8; distance from origin of pelvic to origin of anal — 13.4 and 13.8.

Sixteen embryos were obtained from a female of *Sphyrna mokarran* (Rüppell, 1835), caught in November 19, 1962; their identification was based on Clark & Schmidt (1965).

Twelve of the embryos of *Sphyrna mokarran* were morphometrically analysed (figure 2, table II), according to Clark & Schmidt (1965). They ranged from 364 to 408 mm total length.

The smallest embryo of *Sphyrna mokarran* morphometrically analysed in literature (Bigelow & Schroeder, 1948), with a 673 mm total length, was obtained in Englewood (Florida, U. S. A.). Eleven proportional dimensions (in per cent of total length) were considered: distance between nostrils — 16.9,

TABLE I

Morphometric data on sixteen embryos of *Carcharinus porosus* (Ranzani, 1840). Values expressed as per cent of total length, unless otherwise indicated.

| Morphometric data | <i>Carcharinus porosus</i> (Ranzani, 1840) | |
|--|--|---------|
| | Range | Average |
| total length (mm) | 152 — 220 | 183.0 |
| trunk at origin of pectoral: | | |
| a) breadth | 8.8 — 11.2 | 10.2 |
| b) height | 8.1 — 10.3 | 9.3 |
| snout length in front of: | | |
| a) outer nostrils | 3.7 — 5.3 | 4.4 |
| b) mouth | 8.2 — 9.5 | 3.9 |
| eye: horizontal diameter (iris diameter) | 2.7 — 3.5 | 3.0 |
| mouth: | | |
| a) breadth | 5.9 — 9.3 | 7.7 |
| b) height | 4.6 — 6.1 | 5.2 |
| nostrils: distance between inner ends | 5.0 — 6.2 | 5.7 |
| gill opening lengths: | | |
| a) 1st gill slit | 1.3 — 2.2 | 1.6 |
| b) 2nd gill slit | 1.8 — 2.6 | 2.1 |
| c) 3rd gill slit | 1.8 — 2.6 | 2.2 |
| d) 4th gill slit | 1.8 — 2.5 | 2.2 |
| e) 5th gill slit | 1.3 — 1.8 | 1.6 |
| dorsal 1, vertical height | 10.0 — 12.9 | 11.1 |
| dorsal 1, length of base | 6.9 — 10.1 | 8.4 |
| dorsal 2, vertical height | 3.1 — 5.6 | 4.4 |
| dorsal 2, length of base | 2.7 — 3.9 | 3.1 |
| anal, vertical height | 3.6 — 5.6 | 4.8 |
| anal, length of base | 3.7 — 5.0 | 4.4 |
| caudal, upper margin | 26.8 — 29.5 | 27.9 |
| caudal, lower anterior margin | 8.1 — 10.4 | 9.2 |
| pectoral, outer margin | 6.8 — 12.7 | 11.2 |
| pectoral, inner margin | 4.3 — 6.2 | 5.2 |
| pectoral, distal margin | 6.2 — 9.0 | 7.5 |
| distance from snout to: | | |
| a) dorsal 1 | 28.5 — 32.7 | 30.7 |
| b) dorsal 2 | 58.0 — 63.1 | 60.6 |
| c) upper caudal | 70.0 — 76.3 | 72.1 |
| d) pectoral | 20.7 — 25.0 | 23.1 |
| e) pelvic | 40.2 — 48.7 | 44.4 |
| f) anal | 53.9 — 59.6 | 57.1 |
| interspace between: | | |
| a) dorsal 1 and 2 | 19.0 — 23.2 | 20.8 |
| b) dorsal 2 and caudal | 6.6 — 9.4 | 7.9 |
| c) anal and caudal | 6.5 — 9.5 | 8.0 |
| distance from origin to origin of: | | |
| a) pectoral and pelvic | 17.5 — 25.0 | 21.2 |
| b) pelvic and anal | 11.2 — 16.1 | 12.9 |
| number of vertebrae | 134 — 163 | 158.5 |

base of dorsal 1 — 10.1, base of dorsal 2 — 5.6, base of anal — 6.7, lower margin of caudal — 10.4, inner margin of pectoral — 4.4, snout to dorsal 2 — 57.3, snout to anal — 55.9, snout to pelvic — 43.7, interspace between dorsal 2 and caudal — 7.1, interspace between anal and caudal — 6.8.

For a young of *Sphyrna mokarran* with 810 mm total length, from the Central Gulf Coast of Florida (Clark & Schmidt, 1965), nine proportional dimensions (in per cent of total length) were considered: standard length — 67.0, distance between nostrils — 16.2, base of anal — 5.9, lower margin of caudal — 10.5, distal margin of pectoral — 10.4, anterior margin of pelvic — 6.9, distal margin of pelvic — 6.8, snout to dorsal 2 — 55.5, interspace between anal and caudal — 6.9.

The large range of vertebral numbers of the embryos analysed (table II) involves the vertebral numbers of two specimens of *Sphyrna mokarran* from the Pacific — 205 and 206, — quoted by Springer & Garrick (1964).

BIBLIOGRAPHY

Bigelow, H. B. & Schroeder, W. C. — 1948 — Sharks. In *Fishes of the Western North Atlantic, Part I. Sears Found., Bingham Oceanogr. Lab.*, New Haven: 59 — 576, figs. 6 — 106.

Clark, E. & Schmidt, K. v. — 1965 — Sharks of the Central Gulf Coast of Florida. *Bull. Mar. Sci.*, Coral Gables, 15 (1) : 13-83, 18 figs.

Springer, V. G. & Garrick, J. A. F. — 1964 — A survey of vertebral numbers in sharks. *Proc. U. S. Nat. Mus.*, Washington, 116 (3496) : 73-96, 1 pl.

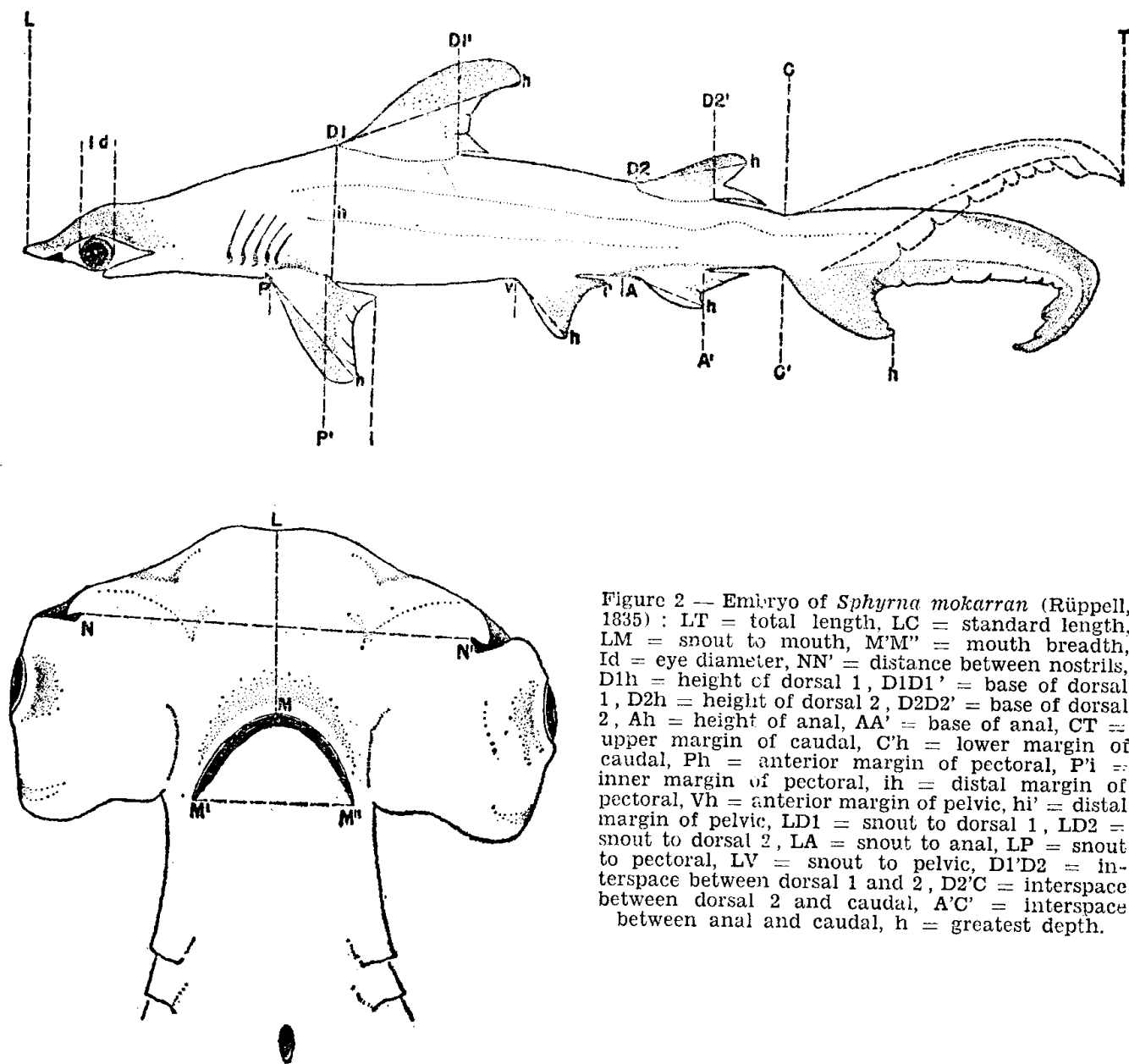


Figure 2 — Embryo of *Sphyrna mokarran* (Rüppell, 1835) : LT = total length, LC = standard length, LM = snout to mouth, M'M' = mouth breadth, Id = eye diameter, NN' = distance between nostrils, D1h = height of dorsal 1, D1D1' = base of dorsal 1, D2h = height of dorsal 2, D2D2' = base of dorsal 2, Ah = height of anal, AA' = base of anal, CT = upper margin of caudal, C'h = lower margin of caudal, Ph = anterior margin of pectoral, P'i = inner margin of pectoral, ih = distal margin of pectoral, Vh = anterior margin of pelvic, hi' = distal margin of pelvic, LD1 = snout to dorsal 1, LD2 = snout to dorsal 2, LA = snout to anal, LP = snout to pectoral, LV = snout to pelvic, D1'D2 = interspace between dorsal 1 and 2, D2'C = interspace between dorsal 2 and caudal, A'C' = interspace between anal and caudal, h = greatest depth.

TABLE I I

Morphometric data on twelve embryos of *Sphyrna mokarran* (Rüppell, 1835). Values expressed as per cent of total length, unless otherwise indicated.

| Morphometric data | <i>Sphyrna mokarran</i> (Rüppell, 1835) | |
|--|---|---------|
| | Range | Average |
| total length (mm) | 364 — 408 | 389.9 |
| standard length | 66.3 — 69.2 | 67.8 |
| snout length in front of: | | |
| a) mouth | 7.4 — 8.0 | 7.7 |
| eye: horizontal diameter (iris diameter) | 2.5 — 3.9 | 2.8 |
| mouth: | | |
| a) breadth | 6.4 — 7.5 | 7.0 |
| nostrils: distance between inner ends | 15.3 — 17.3 | 16.7 |
| dorsal 1, vertical height | 15.5 — 17.2 | 16.5 |
| dorsal 1, length of base | 9.1 — 11.2 | 10.0 |
| dorsal 2, vertical height | 6.5 — 7.8 | 7.2 |
| dorsal 2, length of base | 5.2 — 5.9 | 5.5 |
| anal, vertical height | 5.1 — 6.2 | 5.7 |
| anal, length of base | 5.4 — 6.8 | 6.2 |
| caudal, upper margin | 31.1 — 34.3 | 32.3 |
| caudal, lower anterior margin | 9.6 — 10.9 | 10.3 |
| pectoral, outer margin | 11.1 — 12.0 | 11.5 |
| pectoral, inner margin | 4.1 — 5.3 | 4.4 |
| pectoral, distal margin | 9.5 — 11.0 | 10.1 |
| distance from snout to: | | |
| a) dorsal 1 | 27.3 — 29.0 | 28.3 |
| b) dorsal 2 | 54.7 — 57.6 | 56.0 |
| c) pectoral | 21.5 — 23.4 | 22.2 |
| d) pelvic | 42.7 — 45.5 | 44.0 |
| e) anal | 53.6 — 56.6 | 55.8 |
| pelvic, outer margin | 6.4 — 7.2 | 6.8 |
| pelvic, distal margin | 5.9 — 7.1 | 6.4 |
| interspace between: | | |
| a) dorsal 1 and 2 | 17.5 — 19.5 | 18.4 |
| b) dorsal 2 and caudal | 7.0 — 7.6 | 7.2 |
| c) anal and caudal | 5.5 — 7.4 | 6.4 |
| greatest depth | 10.6 — 11.9 | 11.2 |
| number of vertebrae | 196 — 215 | 207.5 |